

U.S. Naval Hospital Yokosuka

Naval Family Branch Clinic Iwakuni

Japanese Fellowship Program



## Site Director's Welcome



**Jacqueline Lopez, CAPT, NC, USN**  
**Naval Family Branch Clinic Iwakuni**

### **Officer in Charge**

Thank you for your interest in working with us at Naval Family Branch Clinic Iwakuni. Our clinic is a one-of-a-kind facility with a brand-new birthing center and we hope that you find it to be a unique experience. We look forward to welcoming you to our great team.



**Hyun Jun Park, CDR, MC (FS), USN**  
**Naval Family Branch Clinic Iwakuni**

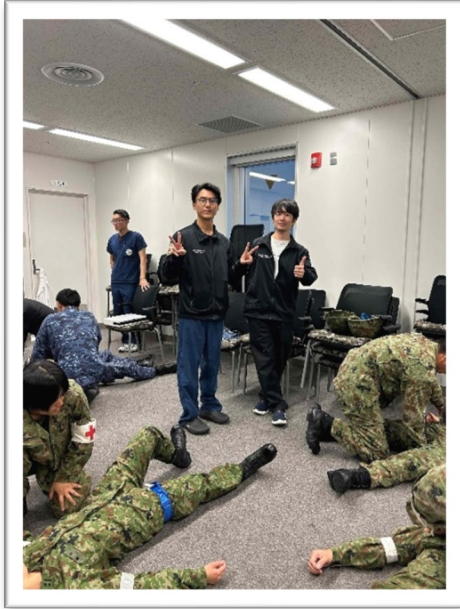
### **Site Fellowship Program Director** **Flight Surgeon**

Thank you for your interest in our Fellowship Program at Naval Family Branch Clinic Iwakuni.

As the newly selected Site Fellowship Program Director, I am grateful for all the work that has been done before by LCDR Bevan and LT Seipel. I am excited to continue developing and growing this program. Our goal is to provide a valuable experience where you can grow and learn (teach too).

<https://www.usuhs.edu/profile/hyun-park-md-phd-faaaai-facai-facp>

We hope to facilitate a truly unique experience that helps you achieve your goals in medical education while maintaining medical readiness for our service members.



## Fellow Duty

At least one Fellow will be designated as the on-call (“Duty Fellow”) for urgent or emergent patient transfers. The Duty Fellow is required to carry the designated phone at all times, 24 hours per day. Mother Infant Care Center (MICC) transfers frequently require the Duty Fellow to evaluate the patient. This includes discussing the case with the attending physician, performing a focused history and physical examination, and coordinating with the anticipated receiving facility to secure acceptance by a host-nation physician. Additionally, patients with conditions outside the scope of our clinic may also require similar transfer coordination. Duty Fellow responsibilities take precedence over all other clinical duties and educational activities. When notified, the Duty Fellow is expected to proceed promptly to the patient’s location and facilitate transfer as efficiently as possible.

## Rotation

Fellows will serve as active participants during all rotations. They will have extensive opportunities to develop and refine core clinical skills, including history taking, physical examination, case presentation, and documentation. Fellows will also participate in procedures as assistants under the direct supervision of credentialed healthcare providers, in accordance with applicable United States laws and regulations. Additional details are provided below.



### Core Rotations

**Acute Care Clinic (ACC)**

### Months

3

**Marine Centered Medical Home (MCHM)**

3

**Medical Home Port (MHP)**

2

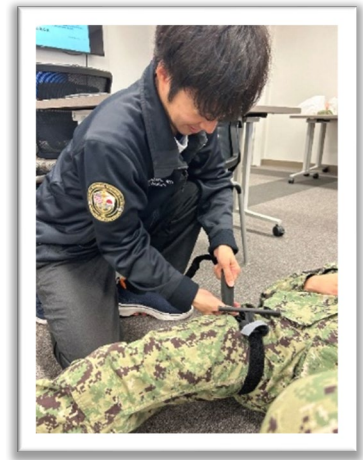
(Aviation, Internal, or Family Medicine)

**Mother Infant Care Center (MICC)** 2  
(Obstetrics or Pediatrics)

**Non-Core Rotations** 2  
Research, Other Elective  
Optometry, Physical Therapy

### **Daily Clinical Work**

Core rotations are based on the locations of our clinics within the main branch clinic. The four core rotations are ACC, MCMH, MHP, and MICC. Fellows will report to their assigned rotation site according to the schedule. During each rotation, Fellows will work alongside a provider to evaluate and manage patients. The assigned provider may vary from day to day. Fellows are expected to attend the daily morning huddle, during which providers review the plan for the day. As a teaching facility, Fellows will be actively involved in patient care. Providers may have Fellows participate in the evaluation of each patient, in accordance with patient preferences.

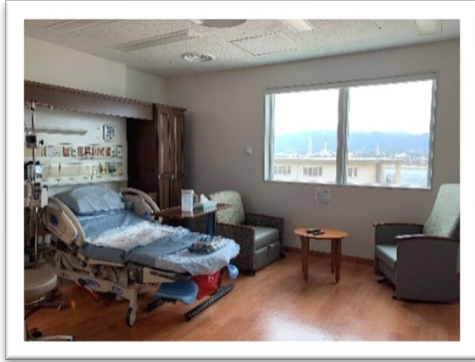


### **Acute Care Clinic (ACC)**

Fellows will rotate through the Acute Care Clinic (ACC), where they will work alongside primary care providers to evaluate and manage acute care cases. Located on the first floor of the clinic, this rotation provides exposure to urgent conditions requiring timely evaluation and intervention.

### **Medical Home Port (MHP)**

Fellows will rotate through Medical Home Port (MHP), working with primary care providers to manage outpatient cases across Family Medicine, Internal Medicine, Pediatrics, Obstetrics, and Gynecology. Located on the second floor, this rotation emphasizes longitudinal care, chronic disease management, and preventive medicine.



### **Mother-Infant Care Center (MICC)**

The Mother-Infant Care Center (MICC), located on the third floor, serves as the clinic's birthing center and a central component of patient care services. Fellows will work as part of a multidisciplinary team that includes the duty obstetrician, pediatrician, anesthesia provider, OR nurse, MICC nurses, and corpsmen, gaining exposure to obstetric and neonatal care.

### **Marine Centered Medical Home (MCMH)**

Fellows will also rotate through the Marine Centered Medical Home (MCMH), located on the second floor. In this setting, Fellows will frequently work with flight surgeons and other providers to manage operational and readiness-related medical issues, with an emphasis on military readiness related care.

### **Teaching Conferences and Educational Forums**

During this fellowship, Fellows will participate in lectures provided by our staff or visiting staff. Moreover, Fellows will be given ample opportunities to present within our clinic as well as joint conferences at other hospitals in the host nation.

Moreover, our staff are committed to providing unique educational opportunities to our Fellows.





*1 Monthly Joint Conference with Iwakuni Clinical Center*



*Host Nation Hospital Visit/ JMSDF Kure Hospital*



*Dinner Conference with Hiroshima Prefectural Hospital*



*Neonatal Transfer Drill with Hiroshima Dr. Heli Team*



**For more information on Iwakuni Fellowship Program,  
please contact us by emailing to: [dha.iwakuni.iwakuni-nbhc.list.fellowship-program@health.mil](mailto:dha.iwakuni.iwakuni-nbhc.list.fellowship-program@health.mil)**